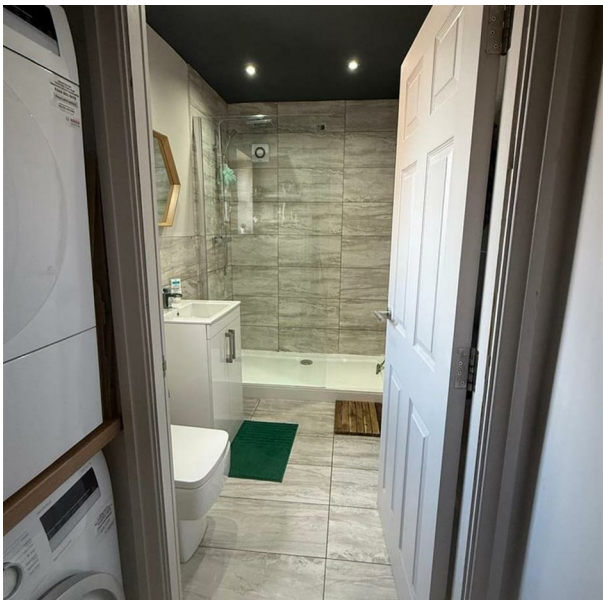
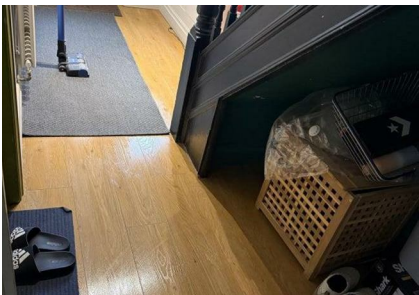


Elm Vale, Liverpool, L6 8NZ
£564 Per Month
Council Tax Band: A



A bright and well-maintained 4-bedroom house share located at 38 Elm Vale, Liverpool (L6 8NZ). This professional HMO offers comfortable, stress-free living with great communal spaces and friendly housemates. Available from 1st September 2025.

Each fully furnished double room includes a bed, wardrobe, drawers, desk, and lamp, with neutral décor and plenty of natural light. The house features two shared bathrooms which are regularly cleaned and well maintained. One bathroom has a shower-over-bath (confirm arrangement at viewing).

The shared kitchen and dining area is fully equipped with cooking appliances, fridge/freezer space, a microwave, washer and dryer, and offers plenty of cupboard space. The communal lounge provides a relaxed area for eating, socialising, or watching TV.

High-speed broadband is available throughout the house, ideal for professionals working from home or for streaming and video calls. Communal areas are cleaned regularly and the property is managed by a responsive team who are available via WhatsApp for quick support.

The rent is £563.33 per calendar month (approximately £130 per week), which includes all bills: gas, electricity, water, council tax and broadband (fair usage policy applies). The deposit is £300 and there is a check-in/inventory fee of £49. Professionals only.

The location offers easy access to Liverpool city centre and university campuses via local bus routes. There are shops and takeaways within walking distance, and the Royal Liverpool Hospital is also close by. On-street parking is available, but restrictions may apply, so please check during the viewing.

This is a respectful, tidy, and community-minded house for professionals. No pets and no smoking indoors.

Rooms at this price with all bills included are in high demand. To arrange a virtual or in-person viewing or to reserve your room (subject to referencing), please get in touch promptly.



Open House Liverpool



Energy Efficiency Rating		
	Current	Potential
Very energy efficient - lower running costs		
(92 plus) A		
(81-91) B		
(69-80) C	76	
(55-68) D		
(39-54) E		
(21-38) F		
(1-20) G		
Not energy efficient - higher running costs		
England & Wales	EU Directive 2002/91/EC	